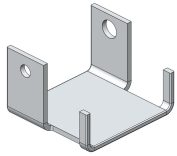


NVENT ERIFLEX FLEXBUS HCBC PLATE WITH PE CONNECTION



CERTIFICATIONS



FEATURES

Rigid tinned copper part provides strong electrical contact to maintain braid expansion during compression

HCBC Plate allows Flexbus Conductor insulation to overlap the connection palm

HCBC Plate with PE connection allows conductor to be added to interconnect neutral and ground/earth

Tinned copper allows for copper or aluminum conductor connections

Installs quickly and easily

RoHS compliant

SPECIFICATIONS

Material Copper

Finish Tinned

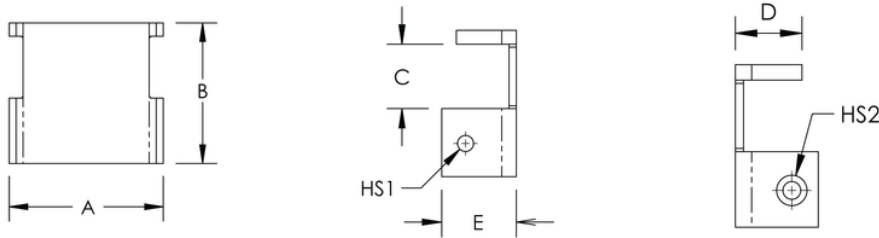
Catalog Number	Item Name	A	B	C	D	E	Thickness(T)	Hole Size 1(HS1)	Hole Size 2(HS2)	Conductor Size	Unit Weight
FLEXPLATE100PE	508183	3.937"	3.937"	1.772"	1.610"	2.760"	0.197"	0.492"	0.730"	960 mm ² , 1280 mm ² , 1810 mm ²	1.565 lb

Catalog Number	Item Name	A	B	C	D	E	Thickness(T)	Hole Size 1(HS1)	Hole Size 2(HS2)	Conductor Size	Unit Weight
FLEXPLATE50PE	508182	1.969"	3.940"	1.772"	1.260"	2.760"	0.197"	0.413"	0.570"	220 mm ² , 360 mm ² , 545 mm ² , 640 mm ²	1.080 lb

ADDITIONAL PRODUCT DETAILS

It is mandatory to use the HCBC Clamp associated with the HCBC Plate for proper Flexbus Conductor connection.

DIAGRAMS



WARNING

nVent products shall be installed and used only as indicated in nVent's product instruction sheets and training materials. Instruction sheets are available at www.nvent.com and from your nVent customer service representative. Improper installation, misuse, misapplication or other failure to completely follow nVent's instructions and warnings may cause product malfunction, property damage, serious bodily injury and death and/or void your warranty.

North America

+1.800.753.9221
Option 1 – Customer Care
Option 2 – Technical Support

Europe

Netherlands:
+31 800-0200135
France:
+33 800 901 793

Europe

Germany:
800 1890272
Other Countries:
+31 13 5835404

APAC

Shanghai:
+ 86 21 2412 1618/19
Sydney:
+61 2 9751 8500



Our powerful portfolio of brands:
nVent.com **CADDY ERICO HOFFMAN RAYCHEM SCHROFF**
TRACER